



John 8:12 "I am the light of the world. Whoever follows me will never walk in darkness, but will have the light of life."

ST. PETER'S CE PRIMARY SCHOOL

firm foundations, shining bright

Matthew 16:18 "You are Peter and upon this rock I shall build my church."

Getting Ready for School



A Guide for Parents 2021

On behalf of the staff and governors, we would like to extend a warm welcome to St Peter's C.E Primary School and Early Years. Starting school is a big event in the life of your child. It is the start of a whole new world of experiences, new people and new things to learn. We are delighted that you have chosen our school as the starting point for your child's journey and we hope that you and your child will enjoy your time with us.

Children begin their learning journey at St. Peter's in one of two Foundation 2 classrooms. Here they learn to share, co-operate, explore and investigate through a wide range of rich, varied and imaginative play based experiences.

At St. Peter's we follow the Early Years Framework. This Framework continues on from the curriculum followed in our Early Years classroom and children's pre-schools and nurseries. It consists of seven areas of learning; all areas are important and inter-connected. Three areas are particularly crucial for supporting children's curiosity and enthusiasm for learning and these are known as the prime areas:

- Communication and language
- Physical development
- Personal, social and emotional development

The knowledge and experience gained from the prime areas naturally complement the next four areas. These are known as the specific areas:

- Literacy
- Mathematics
- Understanding the world
- Expressive arts and design

During their time in the Foundation Stage, children will take part in a careful balance of child initiated play based and adult led activities which meet the needs of all 7 areas of learning.

The Foundation Stage classrooms provide a highly stimulating environment in which to learn and grow. All children have daily continued access to their own indoor and outdoor learning environment where teaching carefully takes into account the interests and dispositions of all children.

As children settled into school they are assessed. This assessment is based upon a balance of high quality observation evidence and adult led activities designed to find out what children already know and can do. This assessment is then used to meticulously plan the environment to facilitate and set challenge for all. Children continue to be assessed at regular intervals throughout the year in order to track their progress.

In September 2021 the government have made statutory the Reception Baseline Assessment. The Reception Baseline Assessment is an age-appropriate assessment of early mathematics and literacy, communication and language and will take place at St Peter's, alongside the schools own assessment, when your child starts.

Reception Baseline Assessment

The reception baseline assessment (RBA) is a short, task-based assessment of your child's early literacy, communication, language and mathematics skills when they begin school. It is statutory for all schools from September 2021.

The assessment can take place at any point in the first 6 weeks of your child starting reception. The assessment will form the start of a new measure of how schools are helping their pupils to progress between reception and year 6.

Your child does not need to prepare. There is no pass mark or score and your child should not realise they're doing an assessment.

Once the RBA is fully established, the intention is to make the key stage 1 national curriculum tests and teacher assessments that children currently take at the end of year 2 non-statutory.

What the assessment involves

During a short one-to-one session with their teacher or teaching assistant, your child will do a number of practical and interactive tasks.

Your child can answer questions verbally or by pointing or moving objects. The assessment has been designed to be inclusive and there are modified materials available – this means it is also accessible to children with special educational needs or disability (SEND) or English as an additional language (EAL). The teacher may pause the assessment at any time, for example, if a child needs a break.

You do not need to do anything. Your child is unlikely to even know that they are doing an assessment when they are completing the tasks.

Why the assessment is being introduced

The assessment provides a better starting point to measure the progress a school makes with their pupils throughout their whole time at primary school, between reception and year 6.

How the data will be used

Children will not 'pass' or 'fail' the assessment; it will provide a snapshot of where they are when they start school in the reception year. The results of the assessment will not be used by government to track or label individual pupils, or to judge the performance of early years settings.

The data from the assessment will only be used at school level to measure the progress of the year group from reception to year 6. The data from the assessment, including numerical scores, will not be shared with parents, pupils, teachers, or external bodies, including schools. There will be no published score.

What will be reported to you

Teachers will receive narrative statements on how your child did, which will tell them how your child performed in the assessment. Schools are not obliged to report the narrative statements to you as a matter of course. However, schools must share the narrative statements with you upon your requests.

Staggered Start to School

To enable all children to receive the time and support they need to settle into school life and for class teachers to assess each child, we operate a staggered start to the beginning of the academic year. This allows all children to get to know their new surroundings and friends in a smaller quieter group.

Our staggered start means that all children will attend school on a part time basis for the first two weeks. More details about this will be shared in the Summer term before your child starts school. We aim to work with all our parents to ensure this is mutually agreed and works for everyone.

Our School Day

Normally the school doors open at **8:50am**. **This may change this year as a result of whole school staggered starts due to COVID restrictions. We will inform all our parents as soon as we have clarification from the Government.**

You are invited to come into the F2 classrooms and help your child locate their peg and hang up their belongings. When children start in September, there will be a range of child initiated activities available in the classroom for them to access. Once your child is settled and happy, we ask that you leave via the classroom door. We understand in the early weeks, this transition point is always emotional and we will be sensitive to the needs of both you and your child but please be encouraged that with positive support from parents and staff the children soon settle. As children become more familiar with school life and routines, we ask that parents leave their child at the classroom door. This normally happens just before the October half term break.

Staff will be available at the school doors to answer any questions. If you would like to have a lengthier chat with your child's class teacher, we kindly ask that you wait till the end of the day when we will have more time to deal with your enquiries.

All children should be settled in by 9:00am for registration. After 9:00am the classroom doors will be closed and arriving after that time will be marked late. (Please see guideline for parents on lateness and absences on our website)

The beginning and end of our school day may change due to COVID restrictions. We will inform all our parents as soon as we have clarification from the Government.

Parking around the school is limited but we kindly ask all parents to park away from the school and enjoy a short walk onto the school grounds. The Foundation 2 classrooms are located at the back to the school and are accessed via the side steps off the main playground or from the back entrance to school. (School Hill) You are kindly asked NOT to use the school car park at ANY time of the day. Please also adhere to the road markings outside school.

A typical day will include adult-led and child-initiated activities. We operate a continuous provision model, meaning that your child can explore the activities on offer, become an independent learner and begin to take responsibility for their own learning and development. All activities are carefully planned to ensure the children are meeting relevant and exciting challenges and having the opportunities to put their skills into action.

An example timetable:

Morning

8.50am Arrive and settle in.

9.00am Registration

9.10am Phonics.

9.30am Morning 'Busy' Learning time

10.50am Maths.

11.45am Lunchtime

Afternoon

1.00pm Afternoon Registration followed by theme time.

1:30pm Afternoon 'Busy' Learning time

3:30pm Home time

Our afternoons follow topic based learning. Whilst we initially set a very loose theme for the half term, we are always ready to alter our plans in order to grab an exciting new learning opportunity which may suddenly arise.

Our timetable will adjust over the year in preparation for the children moving to KS1 and a more formal curriculum. We will begin to attend collective worship with the whole school and have set playtimes with KS1.

Collecting Your Child

Once your child is in school full time, the school day ends at 3.30 pm. Children are supervised by the class teacher and handed over to parents/carers one at a time from their classroom door. It is very important that we know if somebody else will be collecting your child from school. If arrangements change during the day, please contact the school office to make the class teacher aware. Please make every effort to be prompt when dropping off and collecting your child to and from school. It can be unsettling for all when children arrive late and distressing for your child if you are late collecting them.

The beginning and end of our school day may change due to COVID restrictions. We will inform all our parents as soon as we have clarification from the Government.

If you need to collect your child at any time other time of day please report to the school office (main entrance) and sign your child out of school. Please advise whoever is picking up your child of this arrangement. All access around the school will be locked from 9am till 3:15pm

Snack

At St. Peter's we run an integrated day which means we do not stop for a dedicated snack time. Instead we have a snack table available during busy learning times in both the morning and afternoon. Children are taught how to access this and help themselves to fresh fruit and milk. Fresh fruit is provided by the government under their universal fresh fruit scheme for all children in F2 and KS1. Milk is also provided free until your child's 5th birthday. After this date, if you wish your child to continue to have milk, we ask that you register and pay accordingly. (please see School Milk Scheme on our website)

We kindly ask that you provide your child with a NAMED water bottle for use throughout the day. Please ensure this is clearly labeled. We will send this home at the end of each day to be replenished.

School Dinners

We provide all meals in house. All food is cooked by a team of experienced people who prepare the meals from scratch on a daily basis. Our menu is available on the school website. All Foundation and KS1 meals are provided free of charge to all children under the government's universal free school meal scheme. Should your child have any particular dietary requirements or allergies please complete this on your child's information via the Google form. We encourage children to try new tastes and will feed back to you in the first couple of weeks on what they have eaten, but hopefully the children will do this for us!

If you prefer you can choose to provide your child with a packed lunch. We are a health promoting school and would like to encourage all our children to have a healthy well balanced lunch and would encourage you to support this ethos.

Please DO NOT send any food that may contain peanuts. This is due to some children suffering from severe allergies which would result in anaphylaxis. Also, please do not send drinks in cans or glass bottles.

Before and After School Care

We are delighted to be working in partnership with S4YC to launch a new school onsite breakfast and after school club starting in September 2021, alongside full holiday club provision during the Summer 2021 holiday's. The club will be open Monday to Friday during term time and also during the school holidays. All families within the school will have the opportunity to register for the new club.

What times will the club run and how much will it cost?

We offer a full flexible childcare service.

- Breakfast club 7.30am-start of school £4.50
- After school club End of school-6.00pm £10.00
- Holiday club 8.00am – 5.45pm £30.00 per day

How do parent's book and pay for club?

Bookings for September 2021 onwards will be open to all parents during August 2021. The system S4YC use is called iPAL: <https://s4yc.schoolipal.co.uk> . This will be the only way parents can register, make bookings and pay for sessions for the Holiday and Out of School Club. The system is very easy to use. You will have full access to your account information and invoices via iPAL and will be able to print invoices for tax credit letters, plus much more. Parents will also be able to pay via childcare vouchers.

How do parents register?

Register with iPAL in 4 easy steps

Step 1. Visit <https://s4yc.schoolipal.co.uk>

Step 2. Select parent login in the top right-hand corner

Step 3. Complete the new parent registration form and click register, at this point you will receive a confirmation email, Please note this email may go in to your junk folder, please mark it as safe.

Step 4. Once you have completed your registration you will then need to add your child or children

Alternatively you can access an online tutorial at www.ipal.education/parents-user-video to see how easy it is to book and manage your child's activities. For additional support or booking / payment help please contact us on support-s4yc@ipal.education

What will happen during the club?

The club will offer a wide range of adult led activities from arts & crafts, performing arts, sports and cookery. Children will also have the chance to take part in self-initiated play, den making, games, role-play, chill out zones and much, much more.

What policies/procedures are in place during the club?

The company has extensive policies and procedures which are available to view at any time. All staff have been appointed following our extensive safer recruitment process, suitably qualified, DBS (Enhanced) and trained in First Aid and Safeguarding. All parents will be provided with a parent handbook during the registration process with all the information you require.

Who do I need to contact for more information?

Please contact S4YC directly: Paula 07581 075534 / paula@s4yc.co.uk or info@s4yc.co.uk. Alternatively please contact the school office on 0151 342 2556

After School Clubs

We pride ourselves on the number of after school clubs we offer. Starting in September 2021, all our clubs will be run by S4YC. For more information please see - <http://s4yc.co.uk> The variety and number of clubs increase as the children progress up the school. During your child's time in Foundation 2 there will be some before and after school clubs on offer from the Spring term onwards. When children first start school, we find that they become very tired after their long day in school and it can be challenging for them to attend further activities outside the normal school day. As time goes by and children build up their stamina, they are physically able to take on extra activities. We often have parents comment that, although their child has been in full time nursery from a young age, they still find the challenges of school life physically draining.

Keeping in Touch and Working Together

We understand that communication is key to the success of our partnership and there are many ways that we try to ensure you feel informed about all that we do with your child.

Throughout our school every class uses the app 'Seesaw'. This is an excellent tool which has been proven to strengthen connections between home and school. It is an app which allows us to send messages as well as photos or videos of the children learning, we can also send photos of your child's work so you can log in and see it too. Anything shared will only be seen by the parents of the children each picture is relevant to. Your child's individual work will only be seen by you. We require additional consent to enable staff and families to access Seesaw. More information about this and access codes will be provided when your child starts.

Further up the school we use the school Twitter account to share photos and sporting events that children have taken part in during the day.

In the Autumn and Spring term you will be invited to Parents' Evening to discuss your child's progress. In the Summer term you will be invited to a Work Celebration afternoon. This is when you can sit with your child and celebrate their achievements by looking at their work throughout the year. At the end of the summer term, a written report will be sent home.

Parent's are also invited to join each class when they lead collective worships for the school and also during significant times of the year such as the Christmas Nativity performance.

Above all, we are always on the other end of the phone should you have any queries or questions. Please just come and ask.

Parental Involvement in school

Parent helpers provide a valuable contribution to our daily life at St. Peter's. We actively welcome support from our parents and are always delighted when they offer to give up some of their time to support the learning in school especially with reading and spellings. We kindly ask that parents of children in the Foundation stage wait until after the October half term before volunteering to come and help. We have found that some children find this a little unsettling before this date. Please speak to your child's class teacher to express an interest if you would like to do this.

During the 2020/21 academic school year, we were unable to welcome parents into school due to the pandemic restrictions. We will inform our parents when we are able to resume this.

Supporting your Child's Learning at Home.

Early in the Autumn Term, we will invite you to a Curriculum Evening, to explain the curriculum we follow in Foundation 2, any home learning we may set, reading books, phonics and maths. This will provide an opportunity for you to see examples of work we do, resources we use and to ask any questions you may have.

For more information on how to support your child's learning at home please see our website.

School Visits and Visitors

We pride ourselves as a school on providing an exciting, engaging and enriched curriculum. During the school year, we take the children out on local trips and provide visitors who support and develop the termly topic. At St. Peter's we are lucky as there are numerous places to take the children in the local area, and we take full advantage of our surroundings. We feel this enriches the children's learning, and is of course fun! We welcome any parents that want to help with these trips and prior to any visit we will ask for volunteers to accompany us.

School Uniform

It is our policy that all children should wear clothing that is in keeping with a purposeful learning ethos. We also believe it is important that certain activities are facilitated by specialised and appropriate clothing when attending school, or when participating in a school-organised event outside normal school hours. We provide a complete list of the items needed for children's school uniform in our policy. This can be found on our website.

The local stockist of school uniform with our school crest on is 'Cains of Heswall'.

All children come to school wearing their PE/Games kit (school 'tracksuit' and polo shirt) on their designated PE/Games day. Your child's teacher will inform you which day this is early in the Autumn term.

No jewellery is to be worn in school for health and safety reasons.

As we access the outdoor area in all weathers please provide a pair of wellies and a light-weight cagoule that can be left in school. We suggest that all children in the Foundation Stage leave a change of undergarments and socks on their peg, in a named pump bag, in case of accidents.

PLEASE CAN YOU ENSURE THAT ALL ITEMS BELONGING TO YOUR CHILD ARE CLEARLY NAMED.

Medication in School

School requires parents/carers to complete and sign an Administration of Medicines form with all relevant information appertaining to their child's medication and/or medical condition. This form can be found on our school website. Please visit the school office if you need a paper copy.

If your child suffers from Asthma, we ask that an inhalers and one Spacer be provided for school. An Administration of Medicines form will need to be completed with dosage requirements. Each child's inhaler will be clearly labelled with the child's name and the expiry date.

School Communications and Payments

Parent pay:

In an attempt to remove all cash and cheques from school we ask all parents to only use our e-payment method to pay for dinner money, trips, music lessons etc. This can be done online using a very secure website called ParentPay.com. For more information please see our website. You will receive login details for this early in the Autumn term.

Data Protection Information

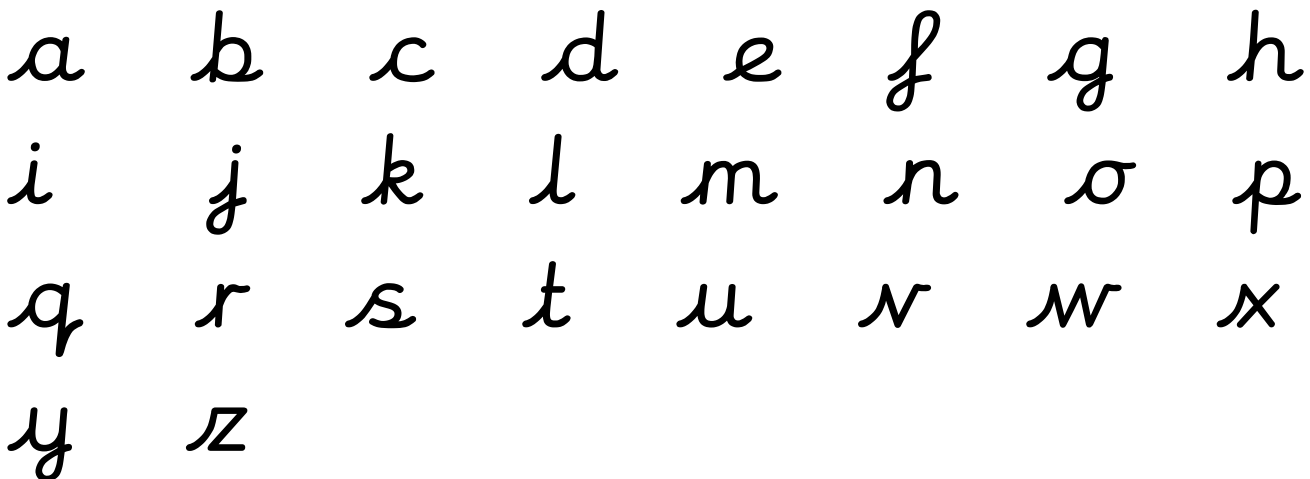
During your child's time with us, we will gather and use information relating to you. Information that we hold in relation to individuals is known as their "personal data". This will include data that we obtain from you directly and data about you that we obtain from other people and organisations. Please see our website for more information under the GDPR tab. You will be asked to give consent for school to hold this information via the google form sent directly to our parents.

Head lice

Unfortunately, as with all schools nationally, we do have occasional outbreaks of headlice. We advise that you check your child regularly so that we keep on top of this situation. Children with long hair must have it tied back whilst in school.

Our letter and number formation

At St Peter's we teach the children in the Foundation Stage to write following the pre cursive model. This teaches children to form letters in preparation for joined handwriting as they move into KS1. All children are taught that each letter starts on the line and the series of movements that are needed to form them. In the Foundation Stage we learn both the sound that the letters makes and the name of the letter. Please see our website for more information.



1 2 3 4 5 6 7 8 9 10

How can I help my child when starting school?

Before school begins there are many ways in which you can make this transition as smooth as possible. Here are a few suggestions.

Practical Support

- Help your child to develop the skills they need to be independent, such as getting used to playing with other children, dressing themselves, going to the toilet and washing hands afterwards and looking after their possessions.
- Get storybooks from the library about starting school and read them to your child. In the week before they start school, get your child used to the times they will need to get up in the mornings and go to bed.
- Decide early who is taking your child to school on their first day so they can know as soon as possible what will happen on the morning.
- Share your memories of your first day or funny and light stories about your time at school so they start to get a light-hearted sense of what to expect.
- Plan a treat for the end of the school day; it's likely they will be tired so a simple trip to the local park or their favourite dinner would be more than enough.

Emotional support

- Talk positively to your child about starting school, as well as listening to and acknowledging any anxious feelings or fears they may have.
- Help your child to build their confidence. For example, make sure they know that it is ok to ask to go to the toilet at school.
- If you are feeling worried, make sure you have someone to talk to so that your children don't pick up on any negative feelings – and remind yourself that it is perfectly normal to have a bit of the jitters yourself.
- Encourage them to be thoughtful about other children's feelings and try to remember to think about taking turns and sharing toys.
- If you sense your child will feel clingy and not want to leave you in fear they will miss out, let them know what you have planned for the day – the duller the better

We do hope that we have been able to provide all the necessary information here and that many of your questions have been answered. If you have any questions or if you would like any further information please do not hesitate to contact our school either via email at schooloffice@stpeters-heswall.wirral.sch.uk or by phone on 0151 342 2556

We look forward to welcoming your child to St. Peter's and hope you have a very long and happy association with our school.